

# Brant Broughton

Church of England Methodist

## PRIMARY SCHOOL

### Dear Parents/Carers,

I hope you all had a restful half term and are re-energised for the second half... a run-up to Christmas! There are lots of exciting opportunities and progress to be made and the excitement of the forthcoming festive period always fills me with hope, joy, peace and love. As the clocks have changed and the evenings are becoming noticeably darker, I am reminded of the words of Samuel Taylor Coleridge (an excerpt from his 1825 poem 'Work without hope'): "*Work without Hope draws nectar in a sieve, And Hope without an object cannot live.*" Have a lovely weekend when it comes.

Best wishes,

Martyn Wells  
Headteacher

### Questionnaire Feedback

Thank you to those families who completed the questionnaire before half term. I have spent some time looking at the responses and reading through the comments. There are lots of supportive, positive remarks in how the children feel in school and how well parents feel they're doing in class. I acknowledge from the responses a frustration with the lack (and in some cases poor timing) of communication from school. I also note a deep sense of wanting to be involved is evident. I have shared this and together I intend to work with the team to improve communication and to find more opportunities to share the school with you.

Friday 1<sup>st</sup> November 2024

### Key Dates After Half Term

**Monday 11<sup>th</sup> November:** Remembrance in School (9:00am start)

**Wednesday 13<sup>th</sup> November:** Open Morning (for potential EYFS families – 9:30 to 10:30am)

**Friday 15<sup>th</sup> November:** Open Afternoon (for potential EYFS families – 1:30 to 2:30pm)

**Friday 15<sup>th</sup> November:** Children In Need (come to school wearing something spotty)

**Tuesday 19<sup>th</sup> & Wednesday 20<sup>th</sup> November:** Parent's Evening (3:30 – 6pm)

**Thursday 28<sup>th</sup> November:** Nigel's Night Train PTA School Disco (3:15 – 4:30pm)... £3.50 a ticket

**W/C 9<sup>th</sup> December:** iSingPop Week!

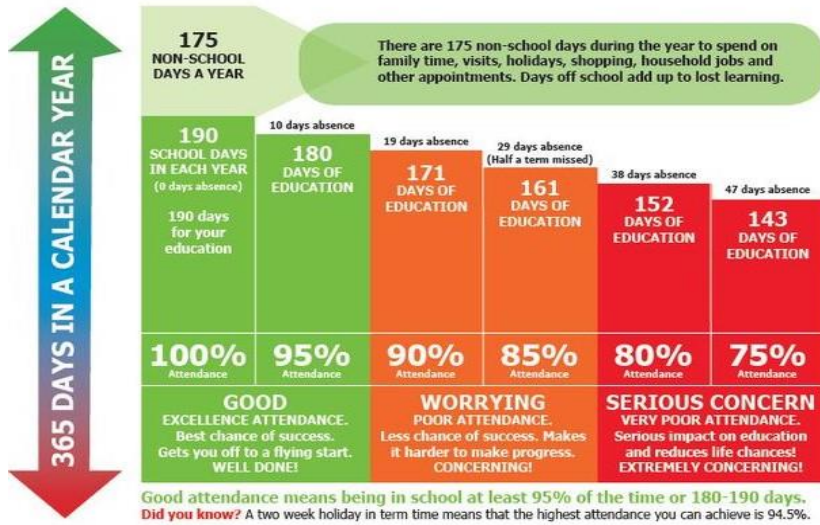
**Thursday 12<sup>th</sup> December:** iSingPop Concert

**Wednesday 18<sup>th</sup> December:** Christingle Service (2:30pm)

**Thursday 19<sup>th</sup> December:** End of Term.

# EVERY SCHOOL DAY COUNTS

Don't miss out on the education you deserve.



## Children in Need



To support Children in Need, we are inviting children to come to school wearing 'something with spots on' for Friday 15<sup>th</sup> November in return for a £1 donation. We will endeavour to make donations online: watch this space for a link to donate.

In a world where You can be anything, be kind.

# Open days!

## Brant Broughton CE Methodist Primary School

"We are a small, caring Church school with a big heart!" Located in Brant Broughton village, with great links to Newark, Lincoln, Sleaford and Grantham.



### Reserve Your Place Now!

Please contact the school office by email at: [ENQUIRIES@BRANT-BROUGHTON.LINCS.SCH.UK](mailto:ENQUIRIES@BRANT-BROUGHTON.LINCS.SCH.UK) or by telephone on 01400 272035 for more information about our school or to reserve a place on one of our open days.

We offer wraparound care daily from 7.45am-5.30pm, in addition we also run a schedule of sports and other afterschool activities.

We have available spaces for children starting school in September 2025



# Open days!

Wednesday 13th November 9:30-10:30 am

Friday 15th November 1:30-2:30pm



Celebrating everyone, preparing for the future, travelling together, acting in hope.



01400 272035



[ENQUIRIES@BRANT-BROUGHTON.LINCS.SCH.UK](mailto:ENQUIRIES@BRANT-BROUGHTON.LINCS.SCH.UK)



[www.brant-broughton.lincs.sch.uk](http://www.brant-broughton.lincs.sch.uk)